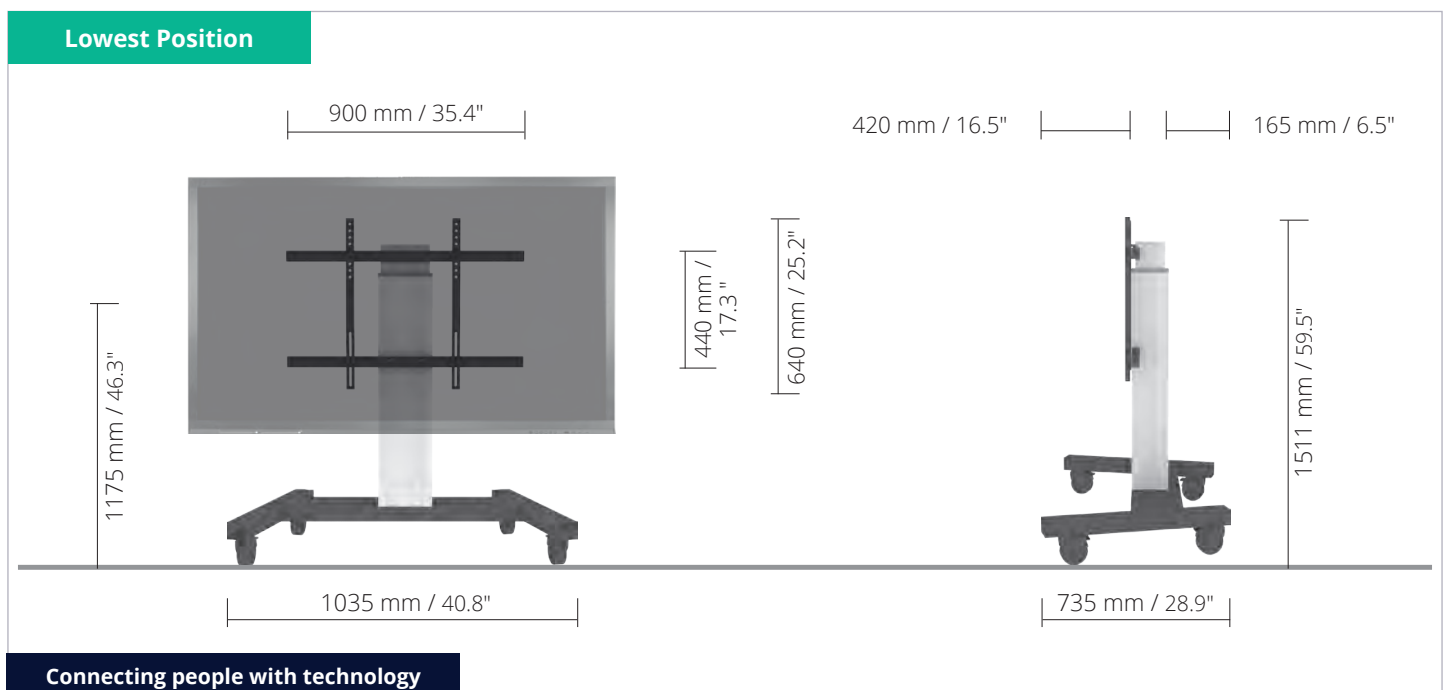
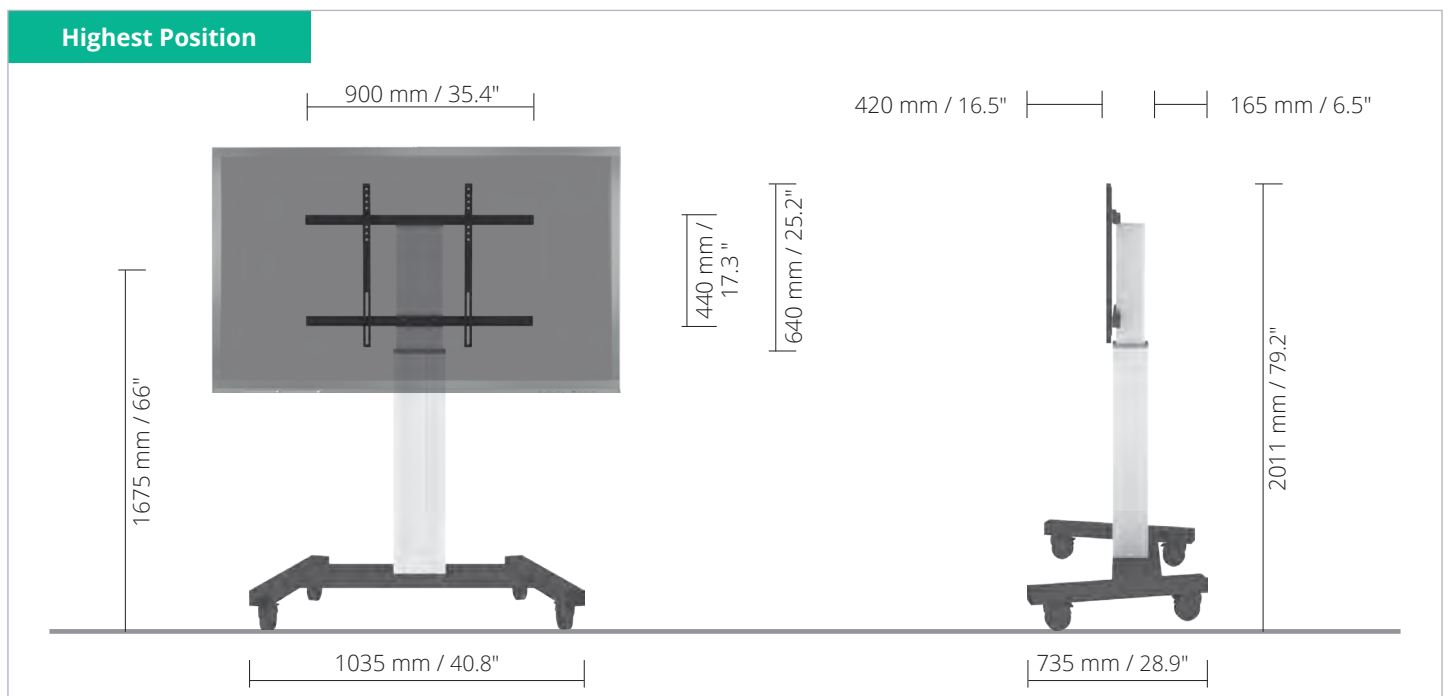


Mobile Height adjustable Trolley Lift LIGHT for up to 86" displays

- Electrical height adjustable column.
- 500 mm of height adjustment.
- V-shaped mobile stand with four heavy duty castors – two with brakes, RAL 7021 black grey.
- Display mount for use with up to 86" screens.
- VESA 200 x 200 up to 800 x 600.
- Maximum load approximately 150 kg / 330.7 lbs.



Connecting people with technology

/ Detail views, Accessories & Packing units

Detail views



Pull & release locking brackets for easier mounting of display



Smooth running & lockable castors



Wired remote control

Accessories



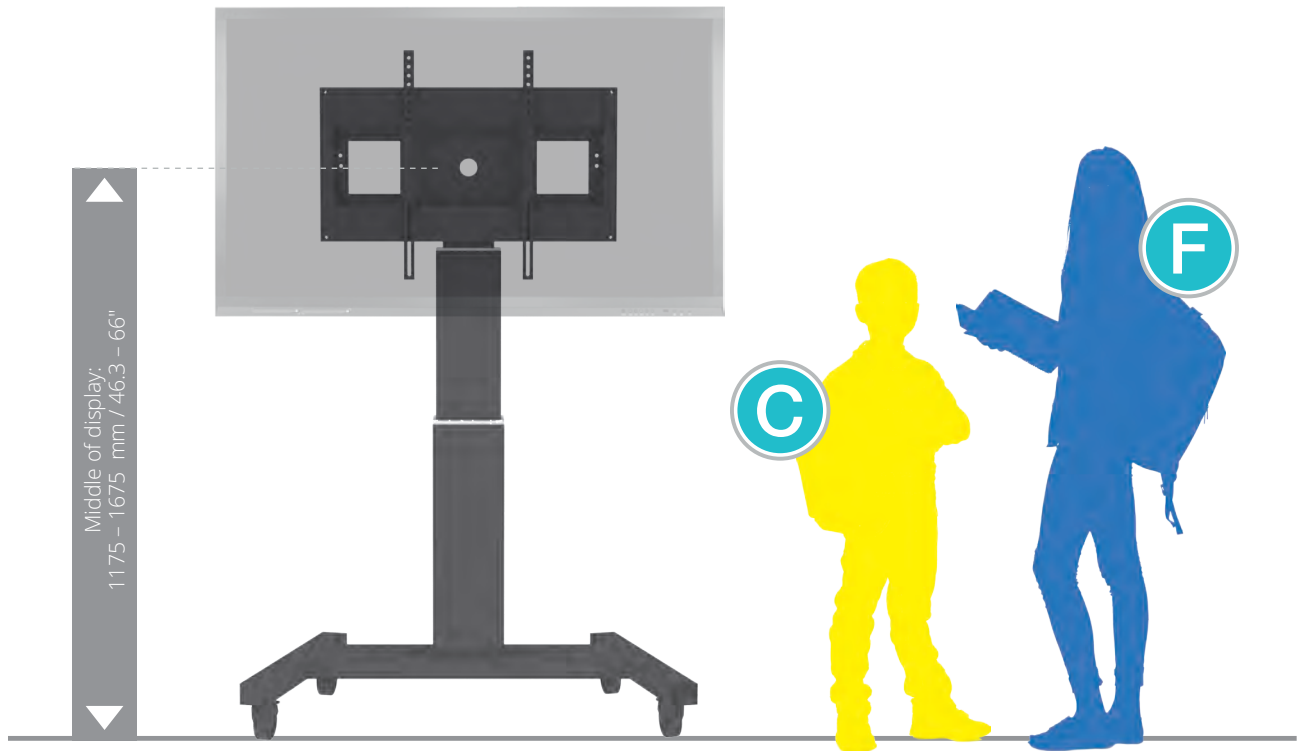
Side shelf

Packing units

Item no.	Description	Packing dimensions (mm / ")	Net weight (kg / lbs)	Gross weight (kg / lbs)
CCEL-AF	Electrical height adjustable column, 500 mm / 19.7" height adjustment, L = 1200 mm / 47.2"	1330 x 270 x 220 / 52.4 x 10.6 x 8.7	24,1 / 53,1	27,8 / 61.3
MST-SCETA VLI	V-shaped mobile stand	1130 x 780 x 140 / 44.5 x 30.7 x 5.5	12,8 / 28.2	15,5 / 34.2
Total weight			36,9 / 81.3	43,3 / 95.5

/ Size Index

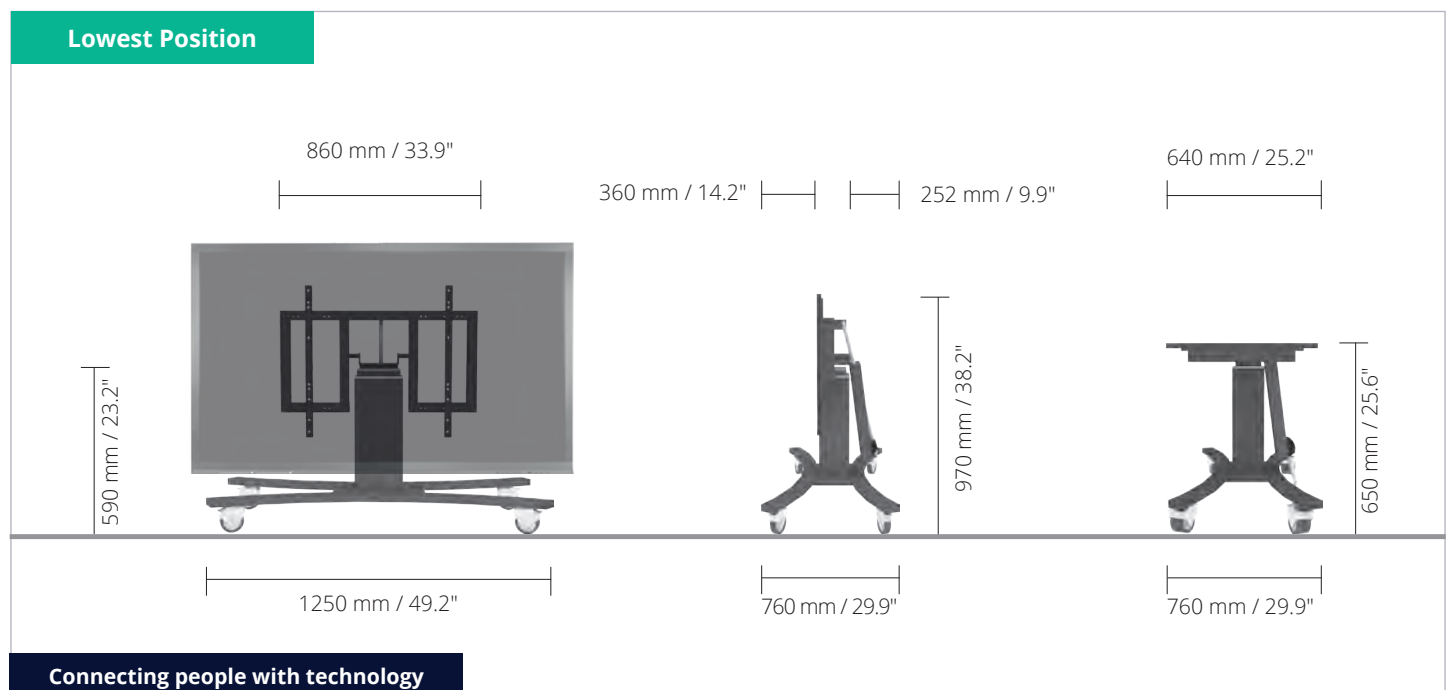
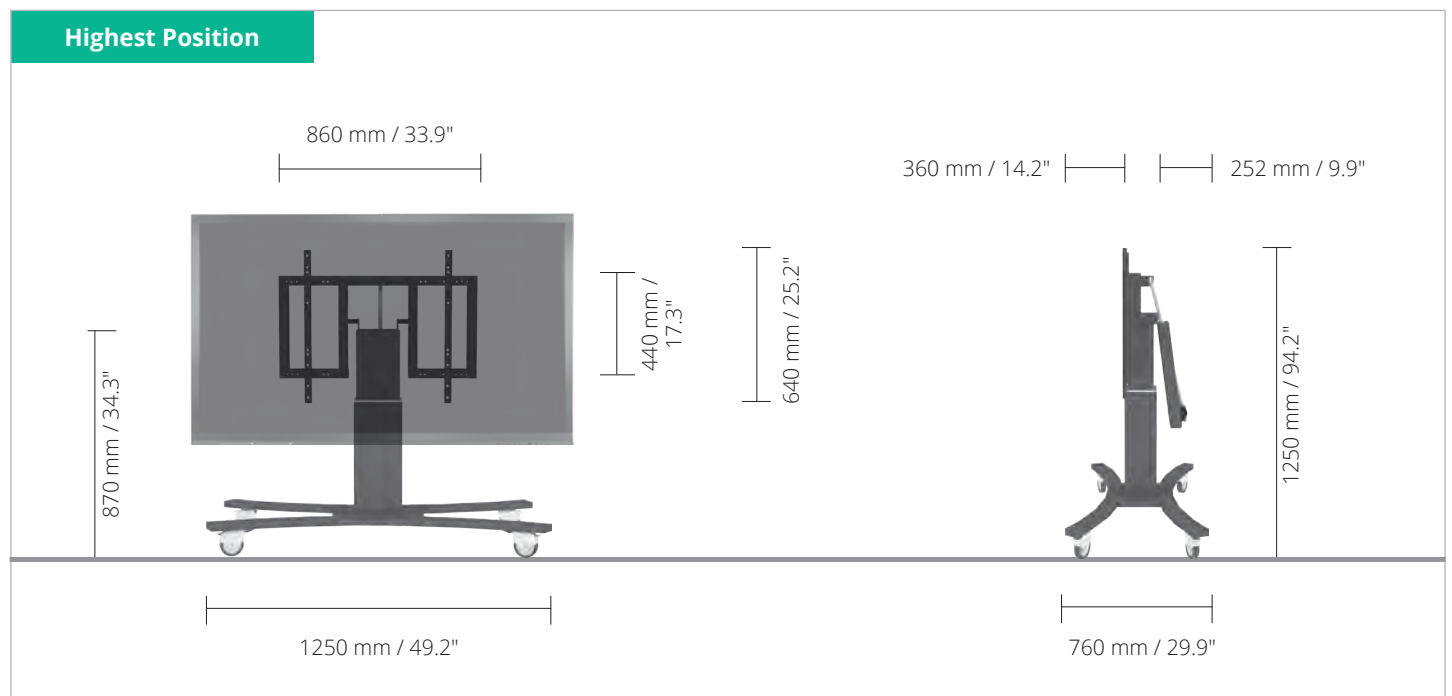
Size index



	Kindergarten		Primary school			Secondary school		Adults
Silhouette	A	B	C	D	E	F	G	
Age (years)	2-3	3-4	4-7	6-11	11-14	13-16	16+	
Body size (mm / ")	930-980 37-38.6	1080-1210 42.5-47.6	1190-1420 46.9-56	1330-1590 52.4-62.6	1460-1765 57.5-69.5	1590-1880 62.6-74	1740-2070 68.5-81.5	
Colour								

Mobile Low Access Height & Tilt adjustable trolley for 55" to 65" displays

- Electrical height adjustable column, black anodized.
- 280 mm of height adjustment.
- C-shaped mobile stand with four heavy duty castors – two with brakes, RAL 9005 deep black.
- Display mount for use with up to 65" screens.
- VESA 200 x 200 up to 800 x 600.
- Maximum load approximately 150 kg / 330.7 lbs.



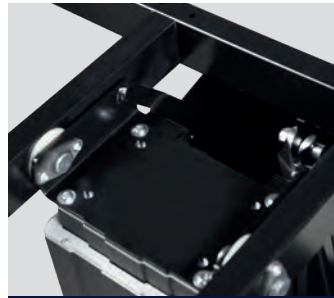
Connecting people with technology

/ Detail views, Accessories & Packing units

Detail views



Screen secured by screws



Tilt function



Smooth running & lockable castors



Wired remote control

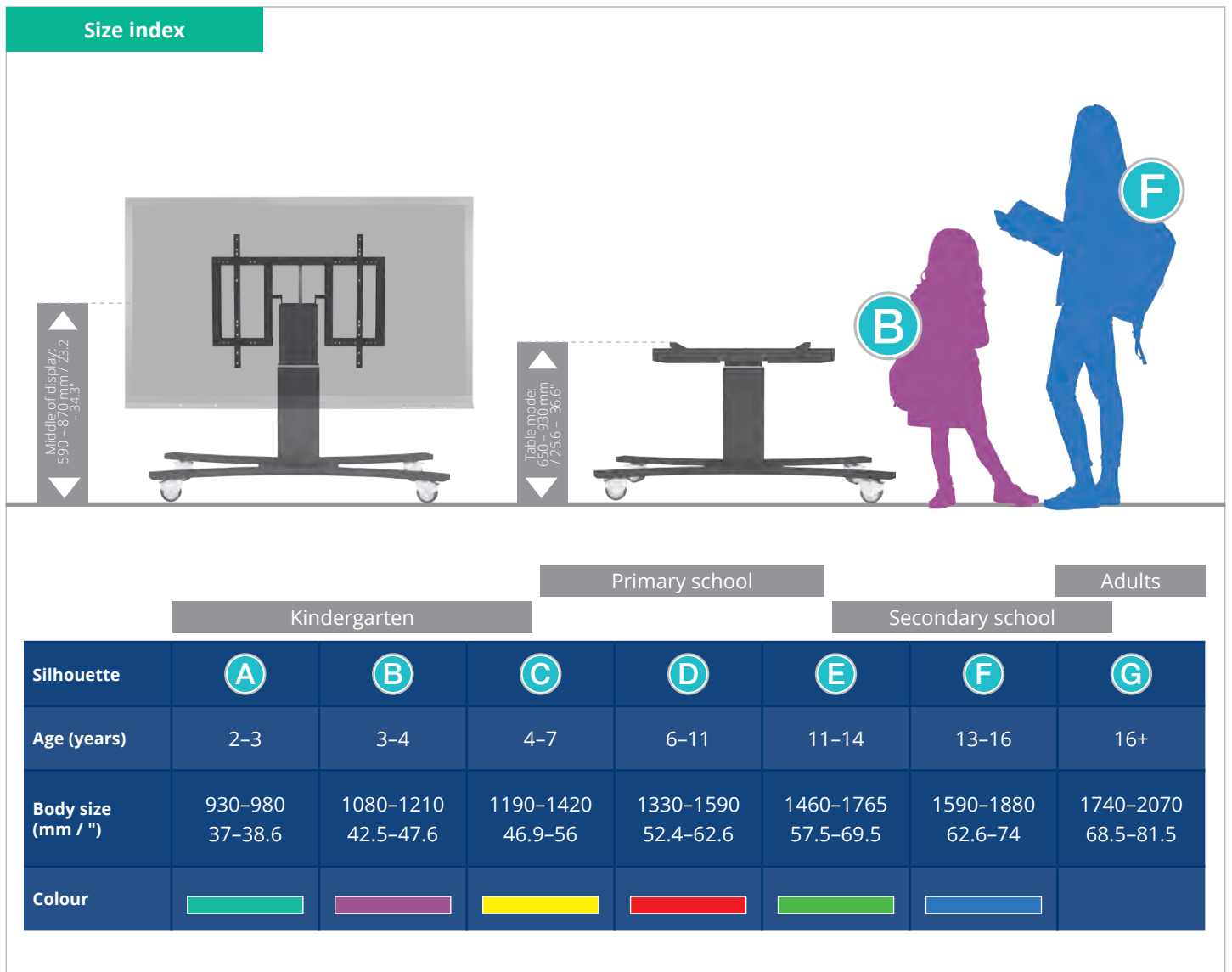
Accessories



Lockable wall bracket

Packing units

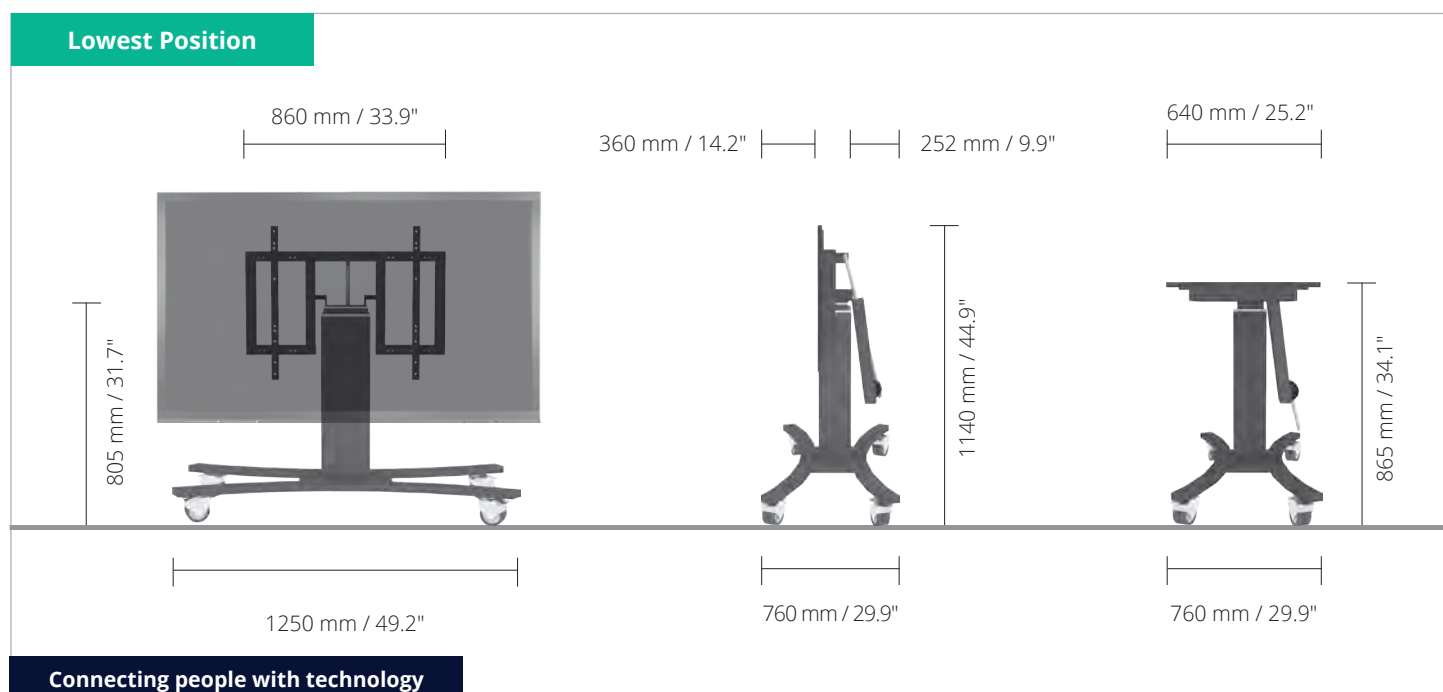
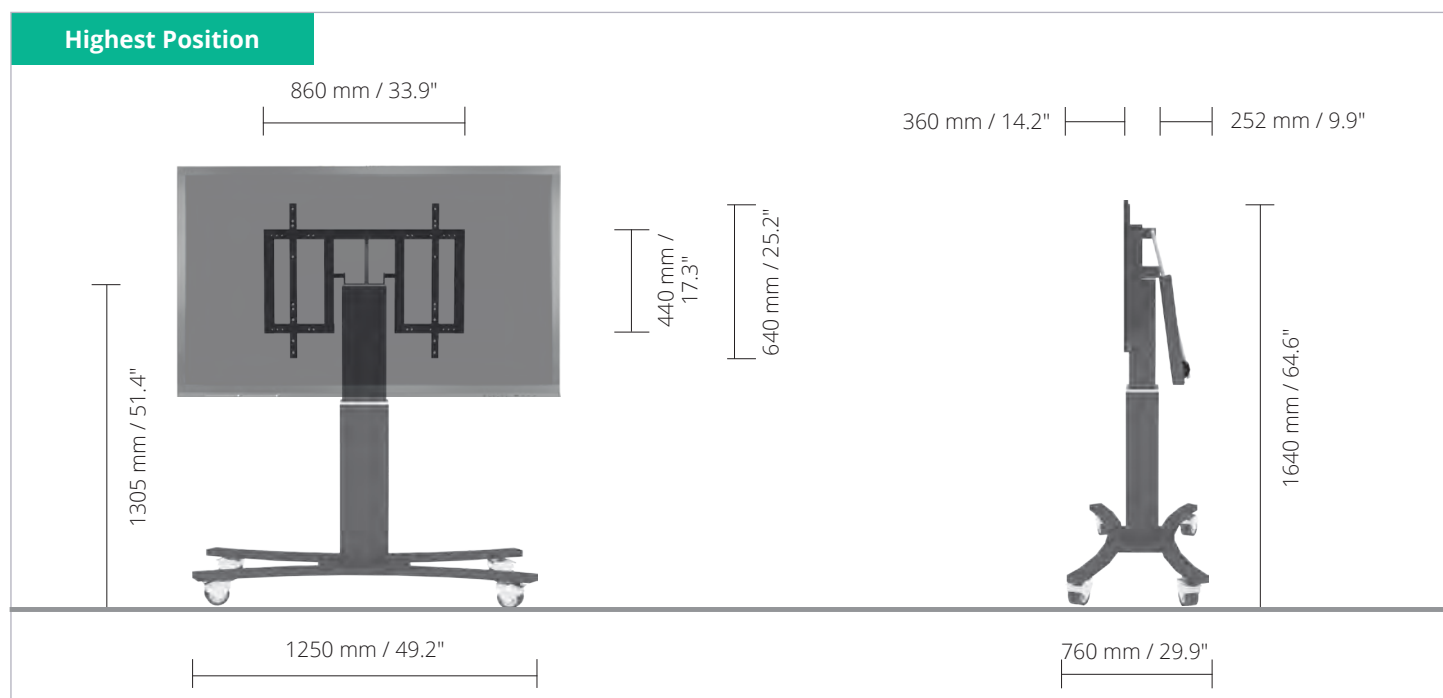
Item no.	Description	Packing dimensions (mm / ")	Net weight (kg / lbs)	Gross weight (kg / lbs)
CCET-28B	Electrical height adjustable column, 280 mm / 11" height adjustment, L = 500 mm / 19.7"	680 x 270 x 220 / 26.8 x 10.6 x 8.7	15,4 / 34	18,0 / 39.7
AF-SCETTA	Display mount	890 x 770 x 480 / 35 x 30.3 x 18.9	22,1 / 48.7	26,8 / 59,1
MST-SCETA-CB	C-shaped mobile stand	1350 x 780 x 120 / 53.1 x 30.7 x 4.7	12,8 / 28.2	15,5 / 34.2
Total weight			50,3 / 111	60,3 / 132.9



Mobile Height & Tilt adjustable trolley for 55" to 65" displays



- Electrical height adjustable column, black anodized.
- 500 mm of height adjustment.
- C-shaped mobile stand with four heavy duty castors – two with brakes, RAL 9005 deep black.
- Display mount for use with up to 65" screens.
- VESA 200 x 200 up to 800 x 600.
- Maximum load approximately 150 kg / 330.7 lbs.



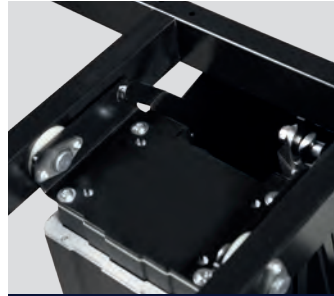
Connecting people with technology

/ Detail views, Accessories & Packing units

Detail views



Screen secured by screws



Tilt function



Smooth running & lockable castors



Wired remote control

Accessories

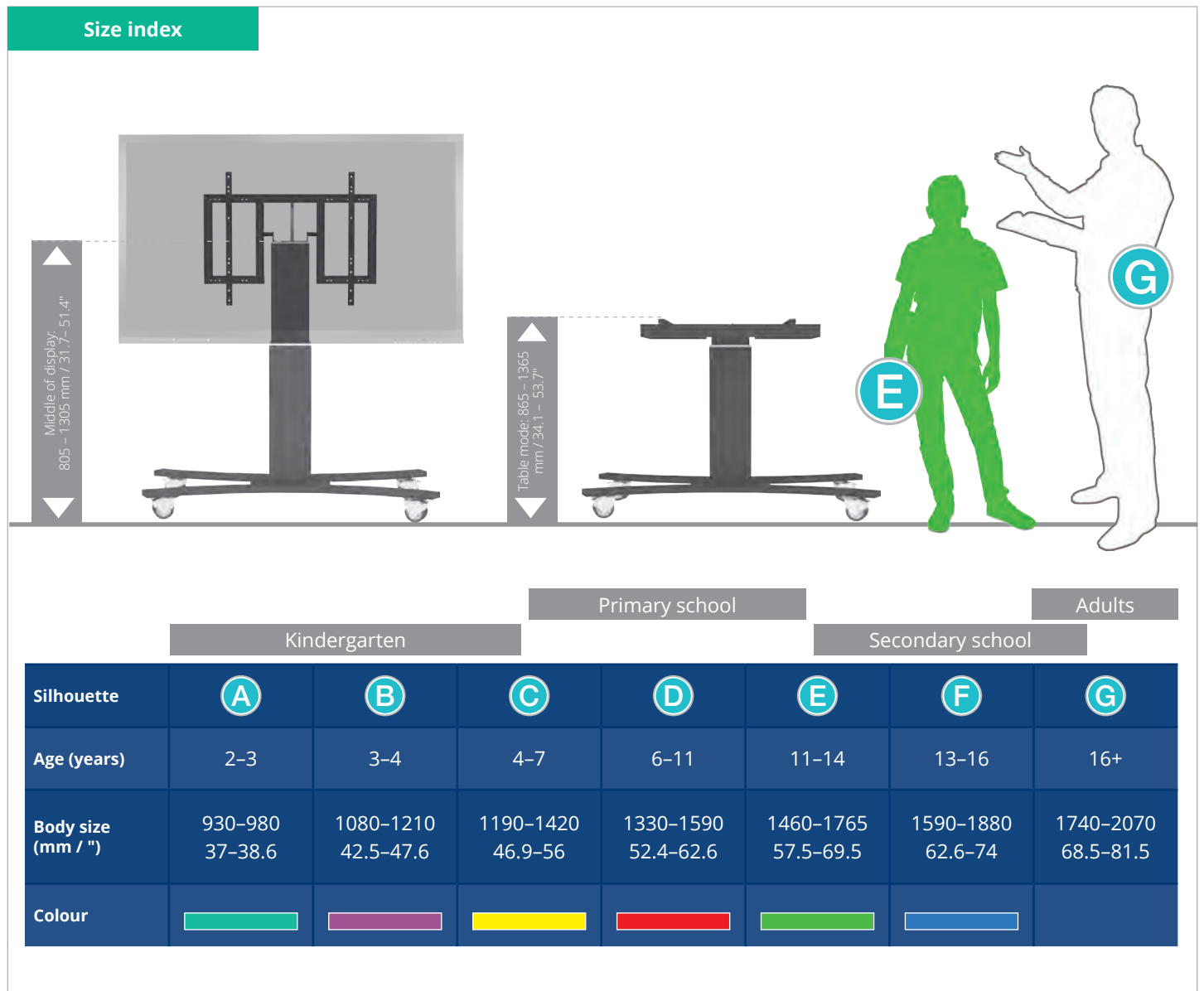


Lockable wall bracket

Packing units

Item no.	Description	Packing dimensions (mm / ")	Net weight (kg / lbs)	Gross weight (kg / lbs)
CCET-50B	Electrical height adjustable column, 500 mm / 19.7" height adjustment, L = 700 mm / 27.6"	970 x 280 x 220 / 38.2 x 11 x 8.7	19,5 / 43	22,1 / 48.7
AF-SCETTA	Display mount	890 x 770 x 480 / 35 x 30.3 x 18.9	22,1 / 48.7	26,8 / 59,1
MST-SCETA-CB	C-shaped mobile stand	1350 x 780 x 120 / 53.1 x 30.7 x 4.7	12,8 / 28.2	15,5 / 34.2
Total weight			54,4 / 119.9	64,4 / 142

/ Size Index



Wall lift LIGHT for up to 86" displays

- Motorised wall mount for up to 86" (interactive) Flat-Panel Displays.
- This lift comes with a column that offers 500 mm of vertical travel.
- The unit ships flat-packed.
- The 1542410 is designed for Flat Panel Displays up to 86". The units feature a display mount with "pull & release" locking brackets for quick and easy mounting of the display.



Features

- ▶ Mount for displays up to 86"
- ▶ 500 mm of smooth motorised height adjustment
- ▶ Integrated cable management
- ▶ "Pull & release" brackets for easy mounting of display
- ▶ VESA pattern, max. 800 x 600
- ▶ 4 leveling feet and 2 wall mount brackets

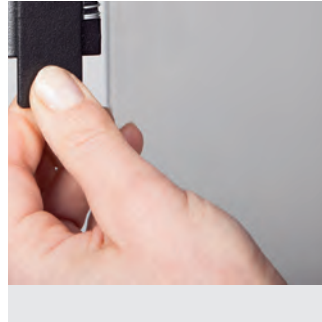
Details



Leveling feet



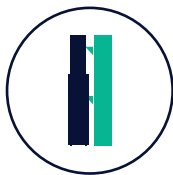
Pull & release locking brackets for easier mounting of display



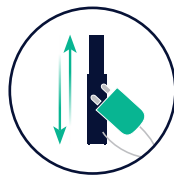
Wired remote control



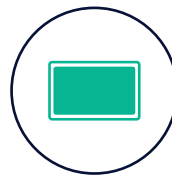
Display mounts (LFD, IFPD)



Wallmounted



Electrical height adjustable



Single display



Maximum load 125 kg / 276 lbs



7 years warranty

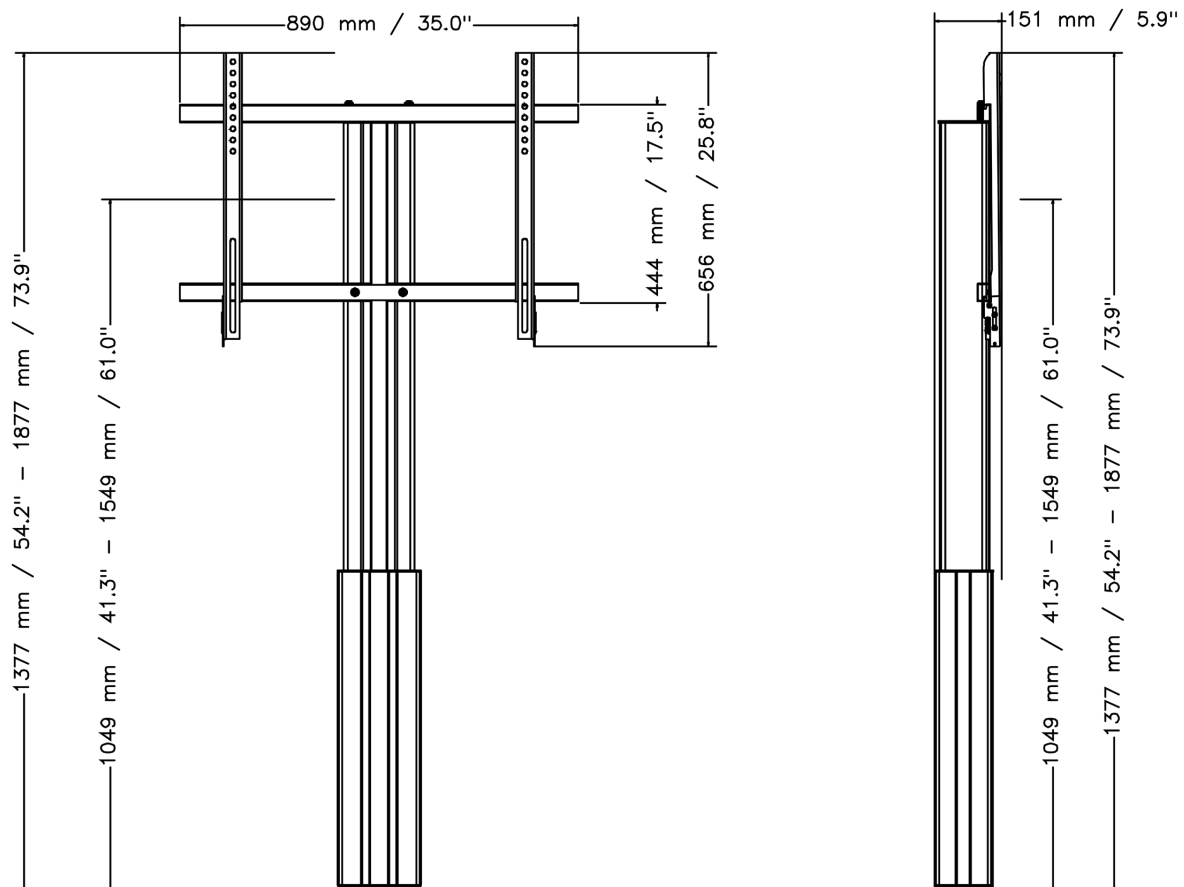
/ Specifications

ITEM NUMBER	1542410
Center of screen to floor	1049 -1549 mm / 41.3 - 61"
VESA horizontal	200 - 800 mm
VESA vertical	200 - 600 mm
Load Capacity	125 kg / 276 lbs
Frame for all	Up to 86"
Dimensions, W x H x T	890 x 1377 - 1877 x 151 mm / 35 x 54.2 - 73.9 x 5.9"
Frame colour	RAL 9005 deep black
Column colour	Aluminium

PACKAGE	Dimensions, W x H x D	Shipping weight
1542410	1320 x 270 x 220 mm / 52 x 10.6 x 8.7"	27.8 kg / 61 lbs
		Total weight: 27.8 kg / 61 lbs

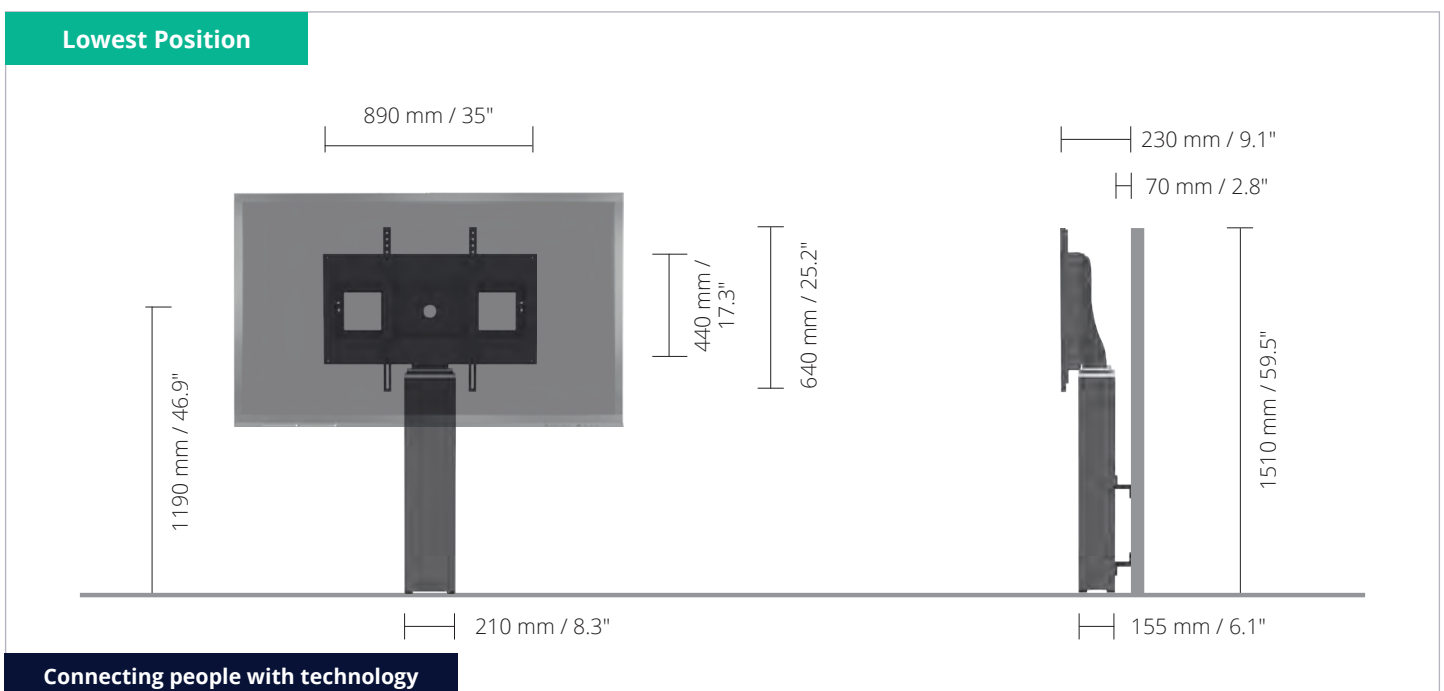
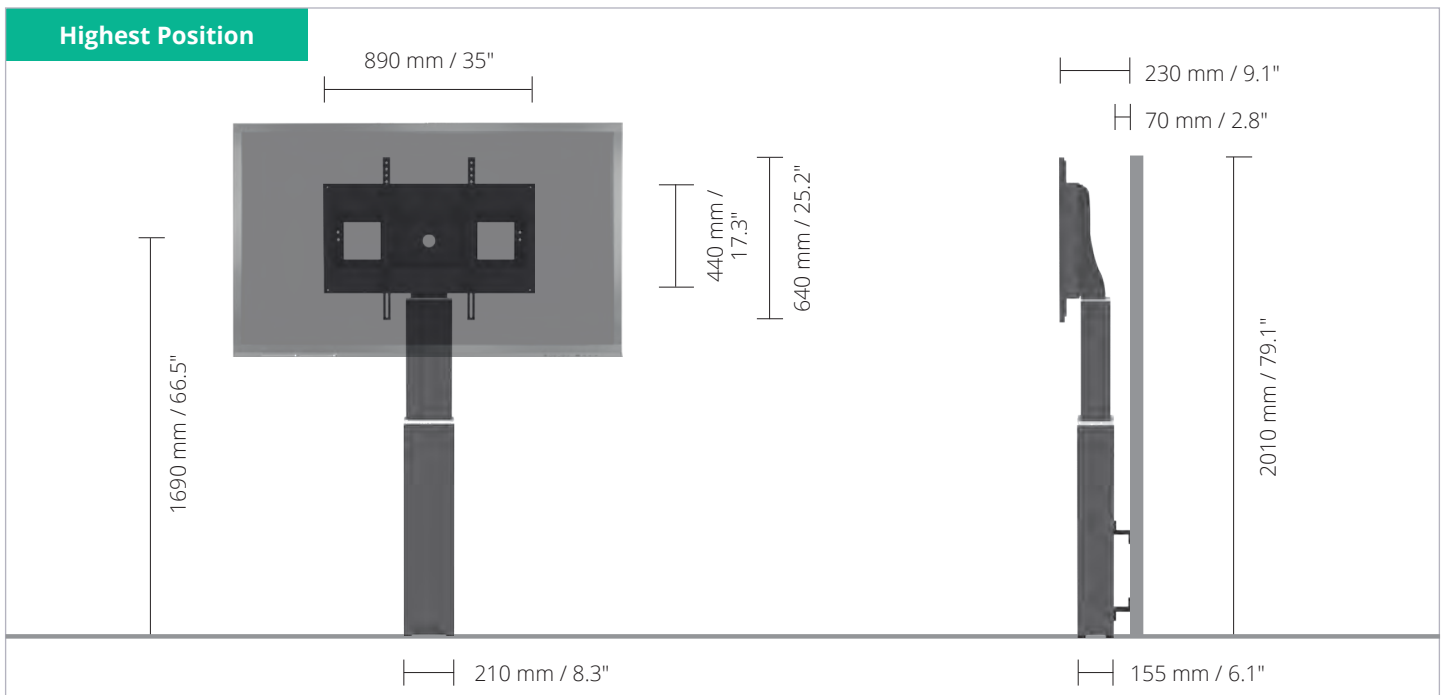
Dimensions

Dimensions in mm / *



Wall lift for up to 86" displays

- Electrical height adjustable column, black anodized.
- 500 mm of height adjustment.
- System suitable for mounting on appropriate walls, wall clearance 70 mm 4 leveling feet supplied.
- Display mount for use with up to 86" screens.
- VESA 200 x 200 up to 800 x 600.
- Maximum load approximately 150 kg / 330.7 lbs.



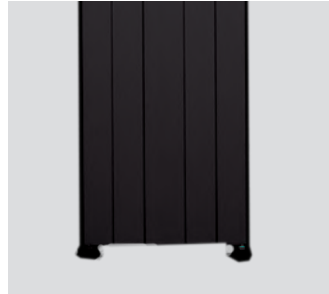
Connecting people with technology

/ Detail views, Accessories & Packing units

Detail views



Pull & release locking brackets for easier mounting of display



Leveling feet

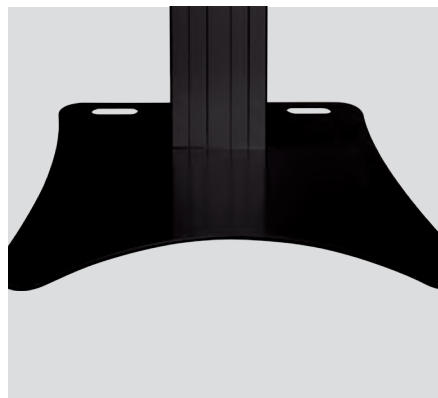


Wired remote control

Accessories



Side shelf



Floor plate

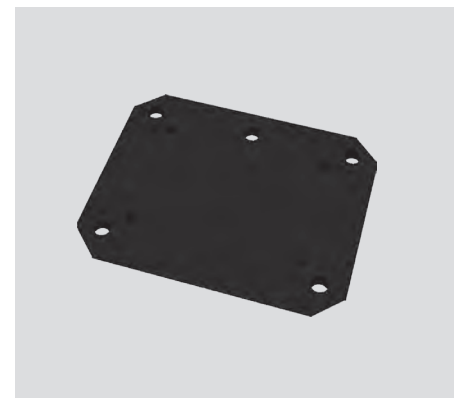
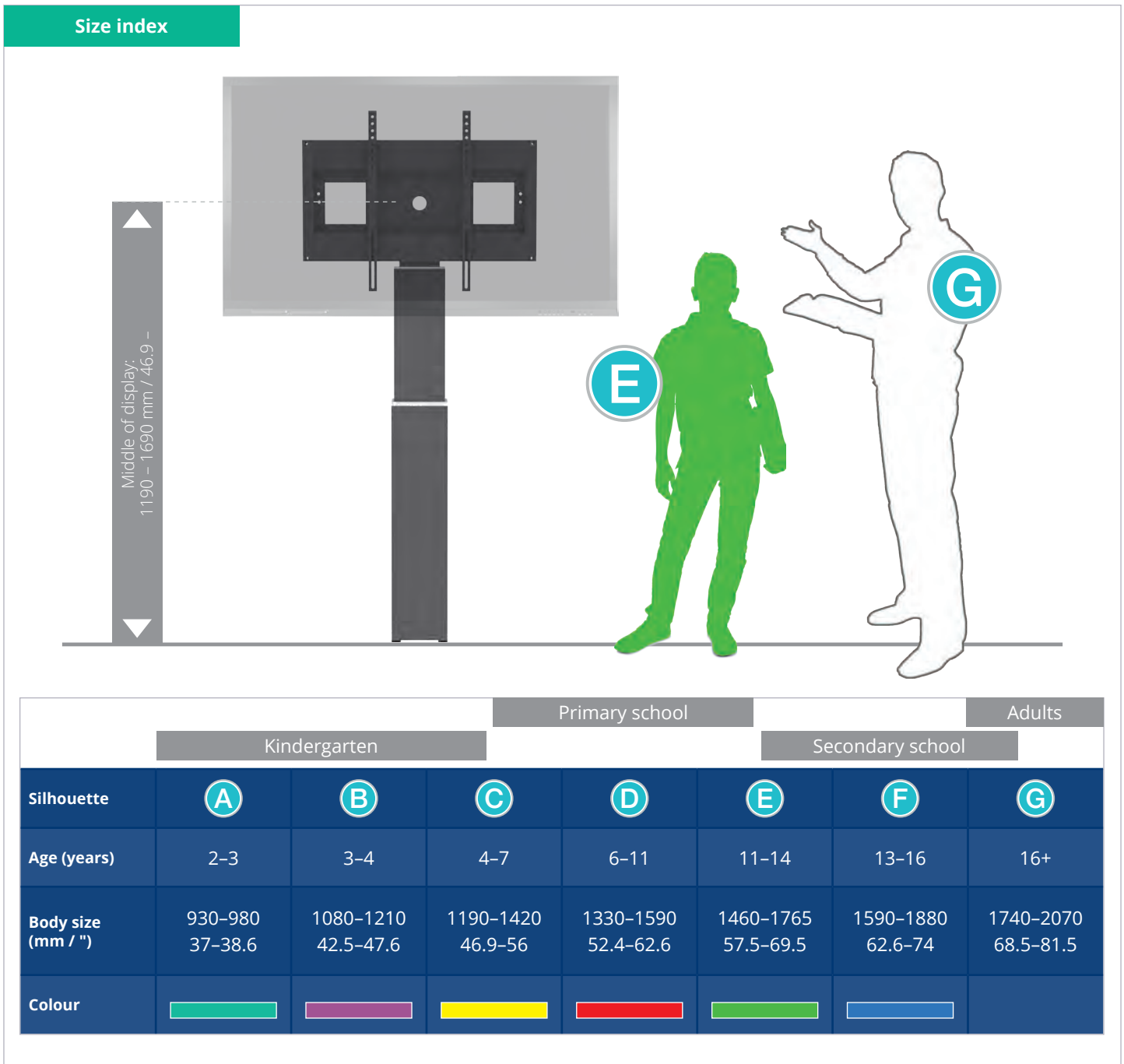


Plate to ground fixing

Packing units

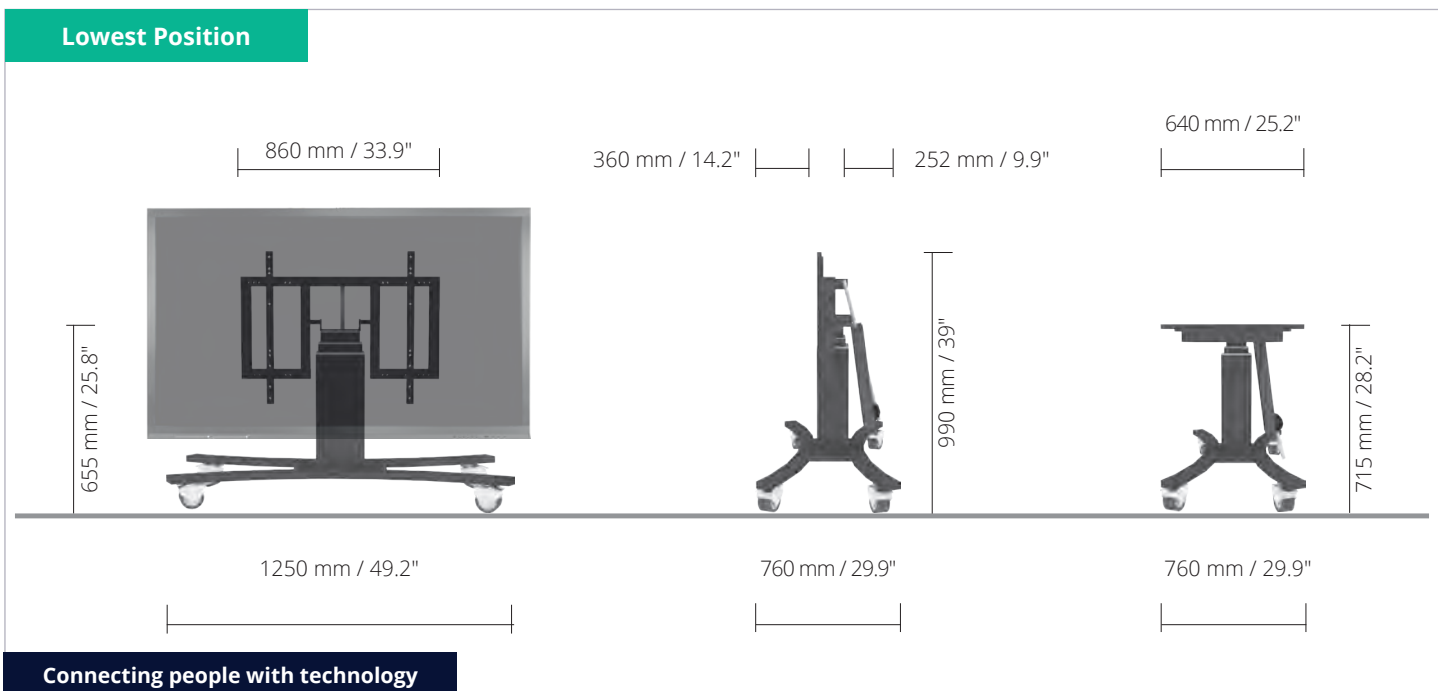
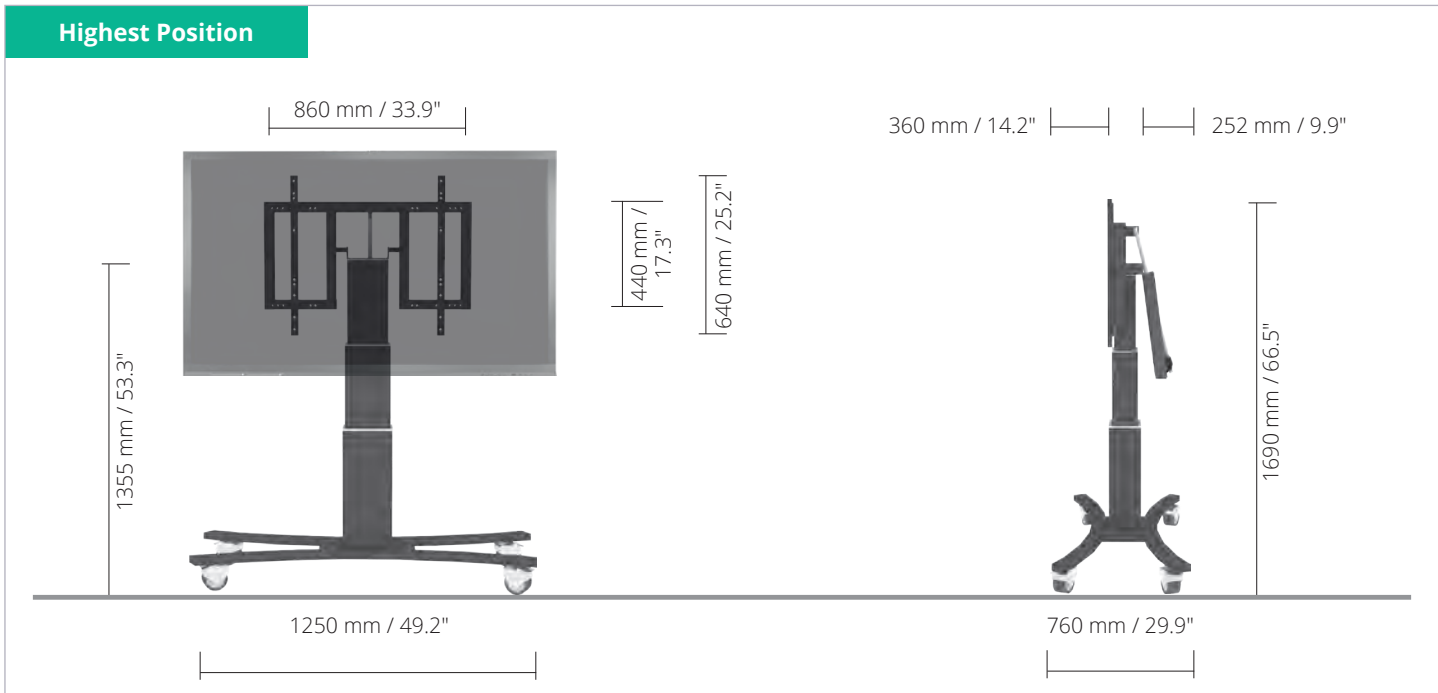
Item no.	Description	Packing dimensions (mm / ")	Net weight (kg / lbs)	Gross weight (kg / lbs)
CCE70B-W	Electrical height adjustable column, 500 mm / 19.7" height adjustment, L = 900 mm / 35.4"	1180 x 270 x 200 / 46.5 x 10.6 x 7.9	21,0 / 46.3	23,1 / 50.9
AF-SCETA-N	Display mount	160 x 900 x 450 / 6.3 x 35.4 x 17.1	11,7 / 25.8	13,6 / 30
Total weight			32,7 / 72.1	36,7 / 80.9

/ Size Index



Mobile XL Height & Tilt adjustable trolley for 55" to 65" displays

- Electrical height adjustable column, black anodized.
- 2 x 350 mm of height adjustment.
- C-shaped mobile stand with four heavy duty castors – two with brakes, RAL 9005 deep black.
- Display mount for use with up to 65" screens.
- Maximum load approximately 150 kg / 330.7 lbs.



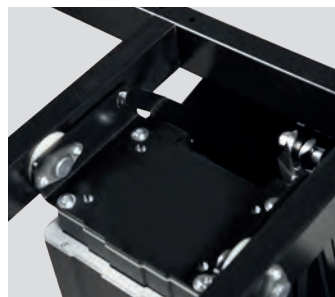
Connecting people with technology

/ Detail views, Accessories & Packing units

Detail views



Screen secured by screws



Tilt function



Smooth running & lockable castors



Wired remote control

Accessories



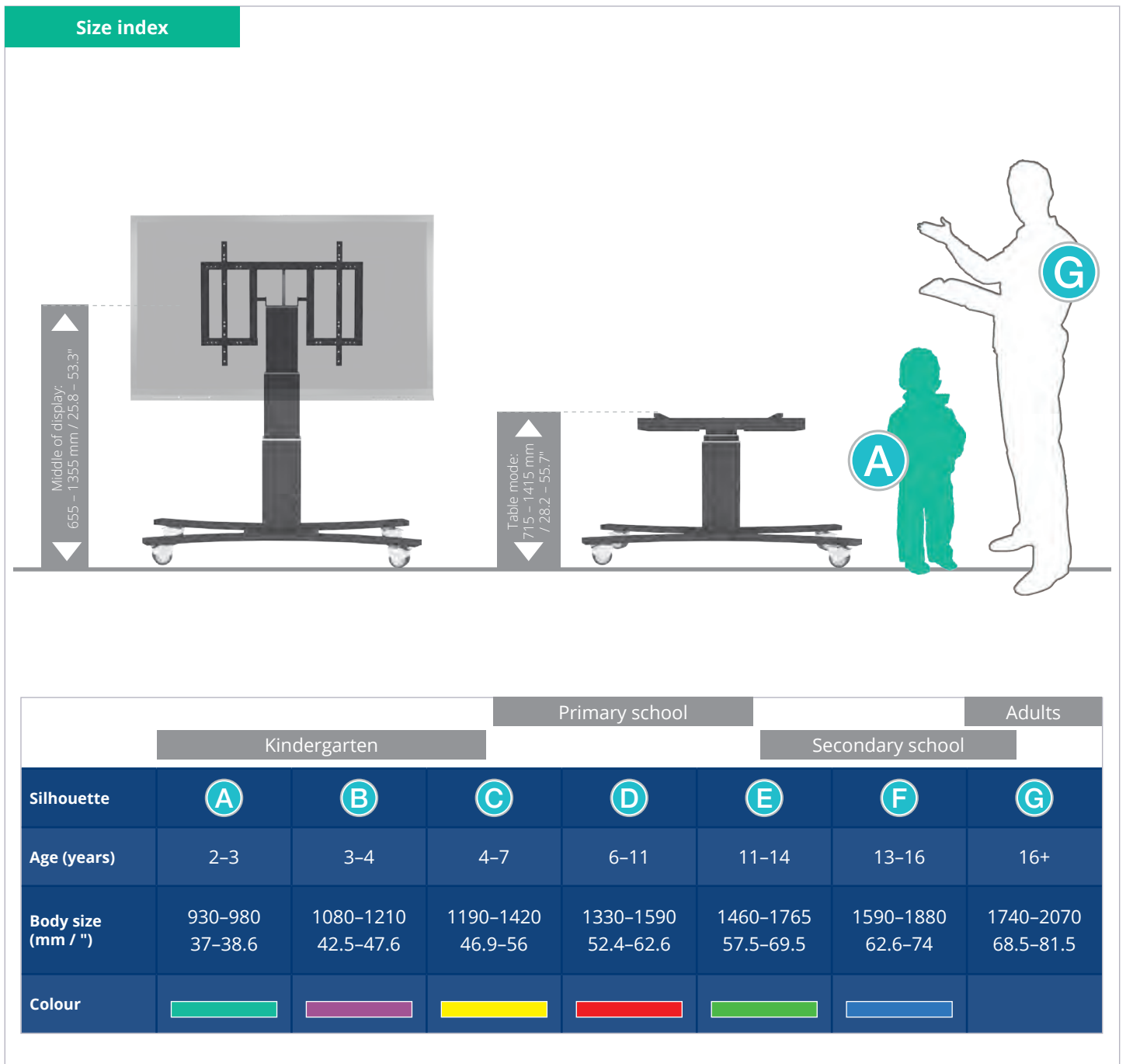
Side shelf



Lockable wall bracket

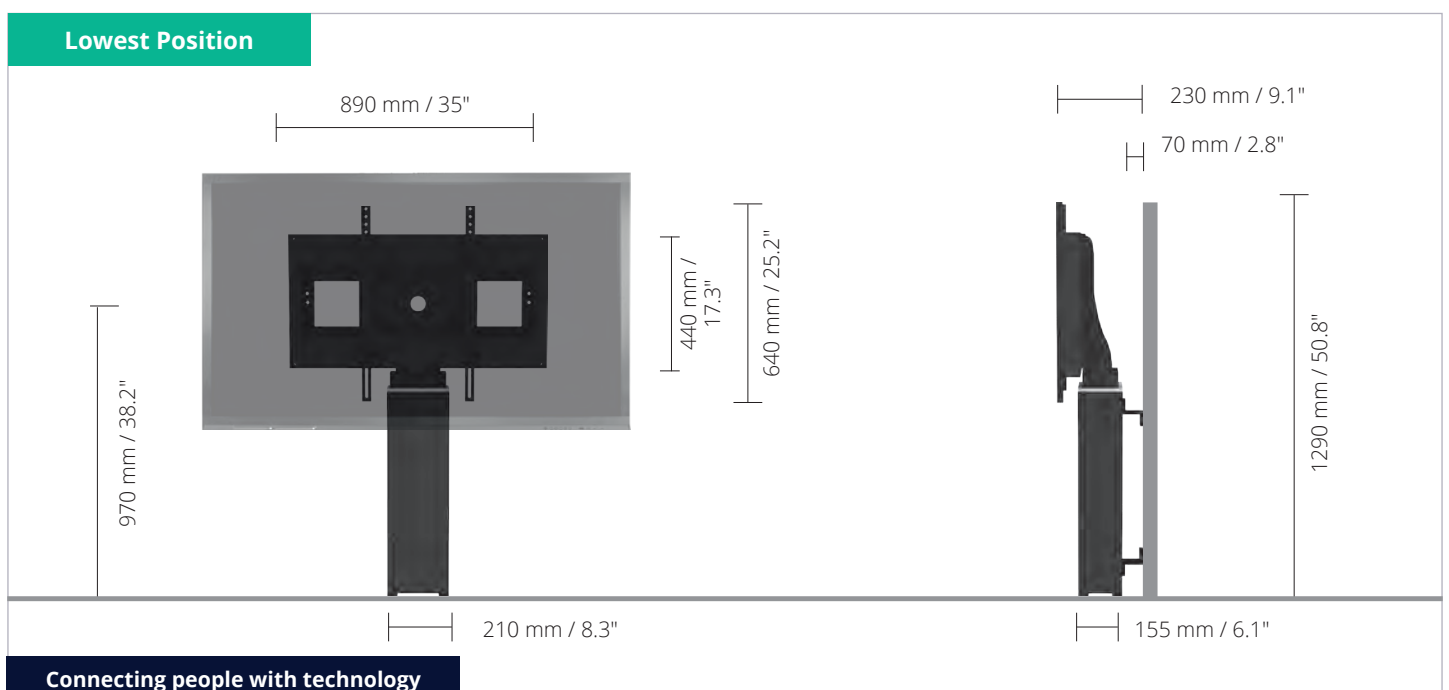
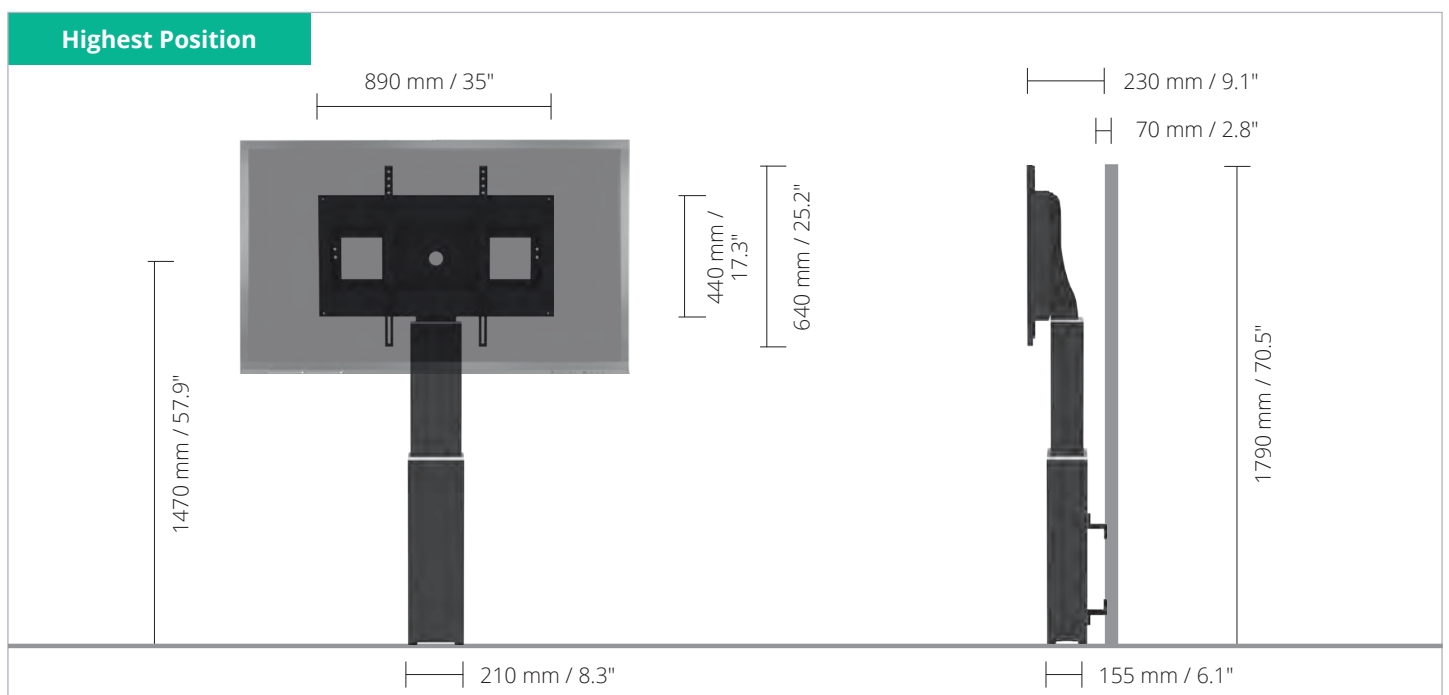
Packing units

Item no.	Description	Packing dimensions (mm / ")	Net weight (kg / lbs)	Gross weight (kg / lbs)
CCET-3535B	Electrical height adjustable column, 2 x 350 mm / 13.8" height adjustment, L = 585 mm / 23"	820 x 270 x 220 / 32.3 x 10.6 x 8.7	21,2 / 45.9	24,0 / 53
AF-SCETTA	Display mount	890 x 770 x 480 / 35 x 30.3 x 18.9	22,1 / 48.7	26,8 / 59.1
MST-SCETA-CB	C-shaped mobile stand	1350 x 780 x 120 / 53.1 x 30.7 x 4.7	12,8 / 28.2	15,5 / 34.2
Total weight			55,7 / 122.8	66,3 / 146.2



Wall lift Low Access for up to 86" displays

- Electrical height adjustable column, black anodized.
- 500 mm of height adjustment.
- System suitable for mounting on appropriate walls, wall clearance is by default 70mm, 4 levelling feet supplied.
- Display mount for use with up to 86" screens.
- VESA 200 x 200 up to 800 x 600.
- Maximum load approximately 150 kg / 330.7 lbs.



Connecting people with technology

/ Detail views, Accessories & Packing units

Detail views



Pull & release locking brackets for easier mounting of display



Leveling feet

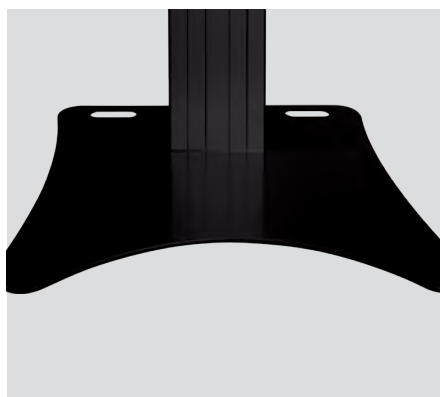


Wired remote control

Accessories



Side shelf



Floor plate

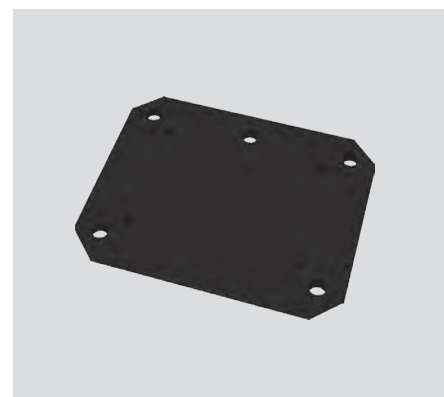
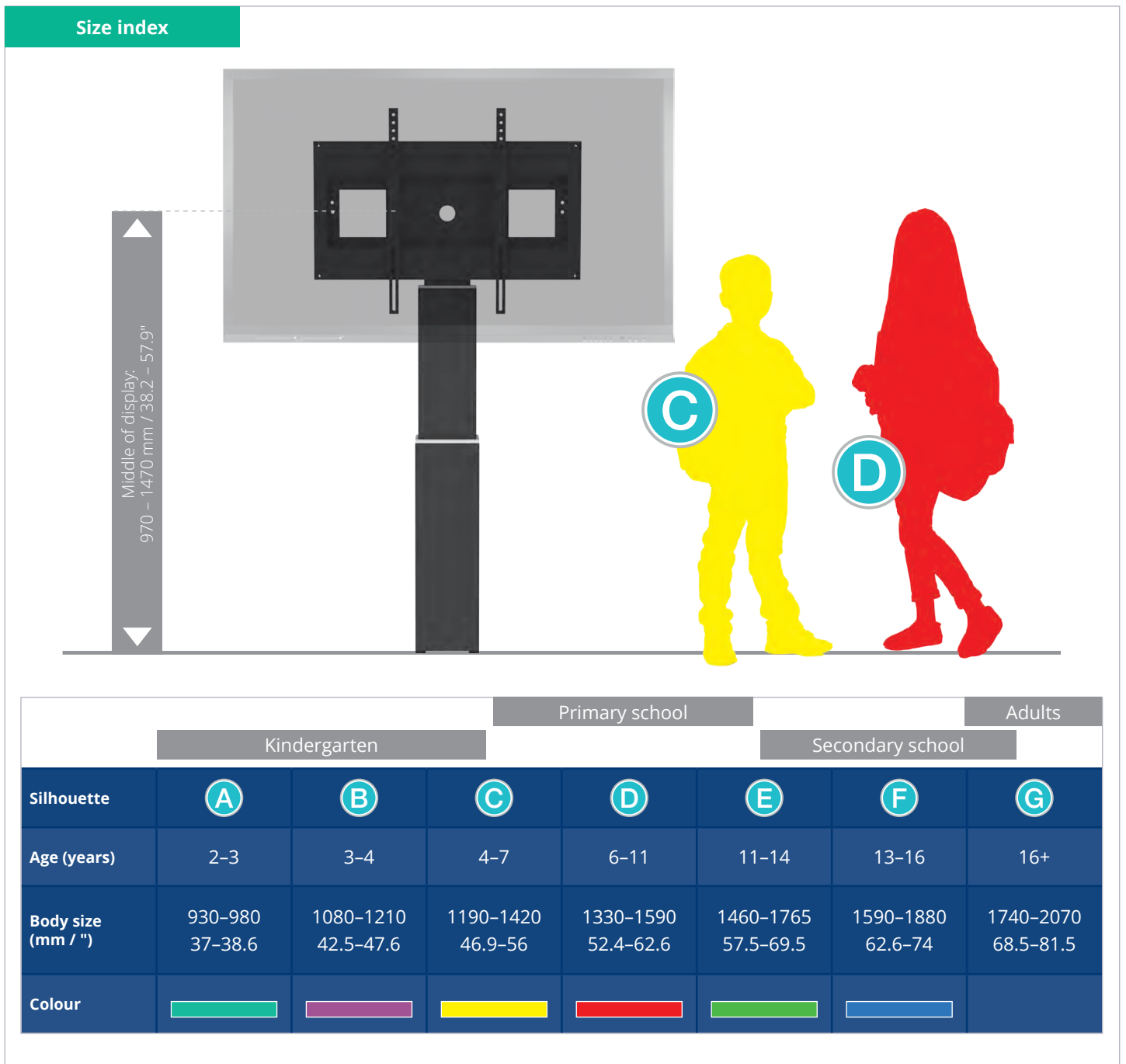


Plate to ground fixing

Packing units

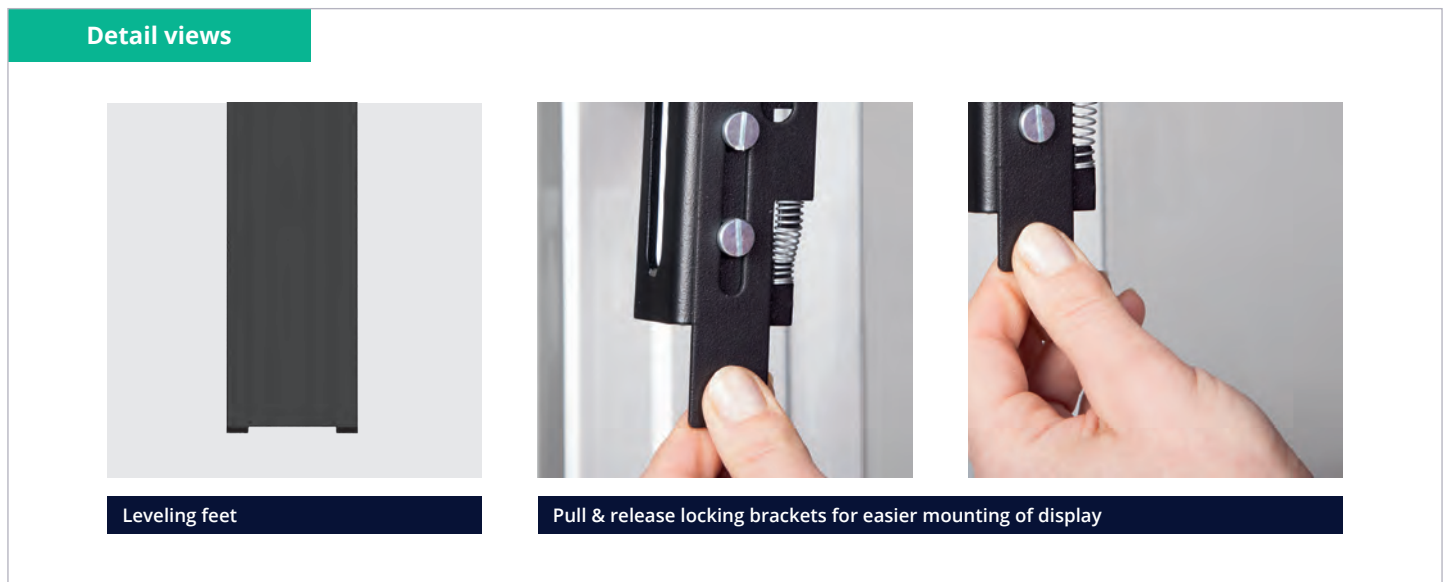
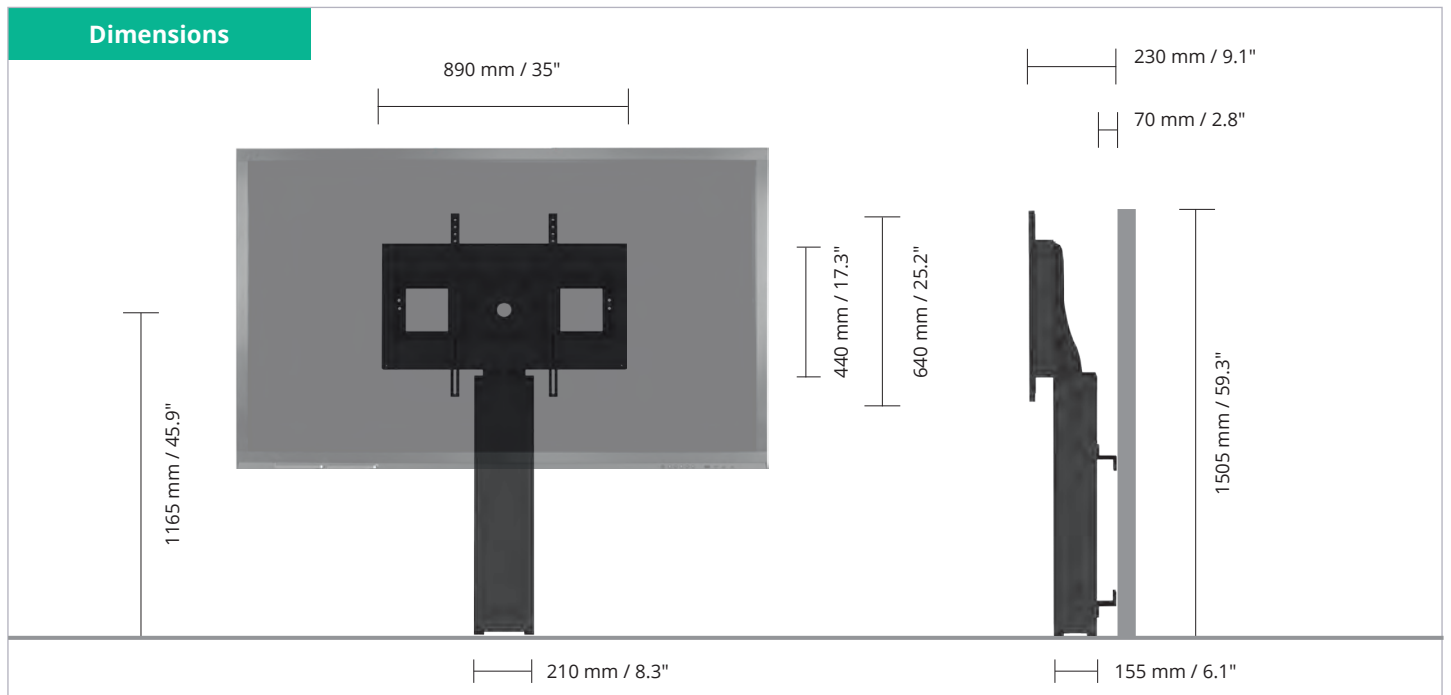
Item no.	Description	Packing dimensions (mm / ")	Net weight (kg / lbs)	Gross weight (kg / lbs)
CCE50B-W	Electrical height adjustable column, 500 mm / 19.7" height adjustment, L = 700 mm / 27.6"	970 x 270 x 220 / 38.2 x 10.6 x 8.7	18,0 / 39.7	19,5 / 43
AF-SCETA-N	Display mount	160 x 900 x 450 / 6.3 x 35.4 x 17.1	11,7 / 25.8	13,6 / 30
Total weight			28,7 / 63.3	33,1 / 73

/ Size Index



Floor to Wall Support Fixed Height for up to 86" displays

- System suitable for mounting on appropriate walls, wall clearance is by default 70mm, 4 levelling feet supplied.
- Display mount for use with up to 86" screens.
- VESA 400x200 up to 800x600.
- Maximum load approximately 150kg / 330.7 lbs.
- Column height 930mm / 36.6".

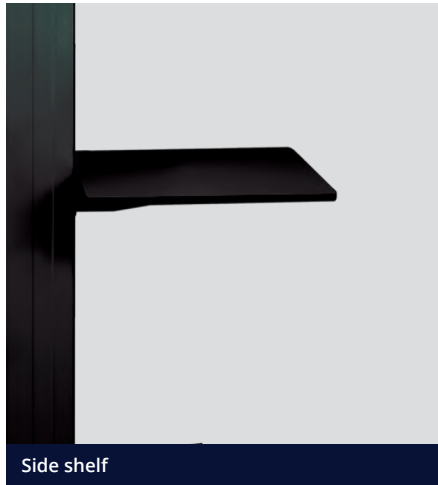


/ Accessories & Packing units

Available Accessories



Video conference camera shelf



Side shelf



Floor plate



U-shaped wall bracket



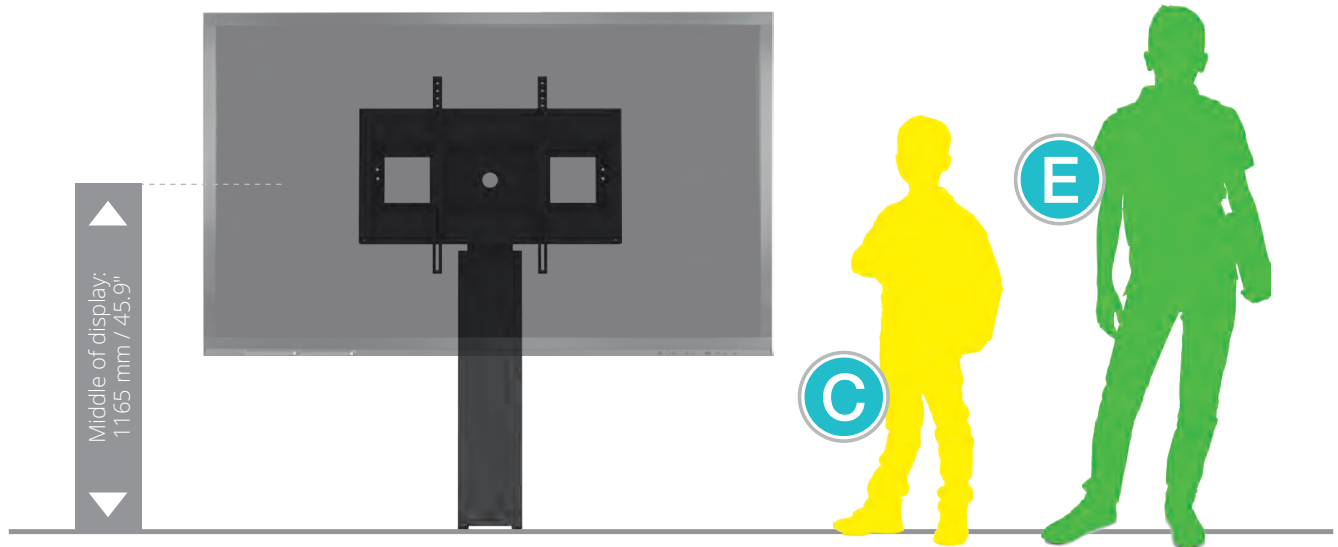
Plate to ground fixing







Packing units

Item no.	Description	Packing dimensions (mm / ")	Net weight (kg / lbs)	Gross weight (kg / lbs)
CC-93WB	Column, column height: 930 mm / 36.6", L = 930 mm / 36.6"	1190 x 270 x 200 / 46.9 x 10.6 x 7.9	13,5 / 29.8	15,3 / 33.8
AF-SCETA-N	Display mount	160 x 900 x 450 / 6.3 x 35.4 x 17.7	11,7 / 25.8	13,6 / 30
Total weight			25,2 / 55.6	28,9 / 63.8

/ Size Index

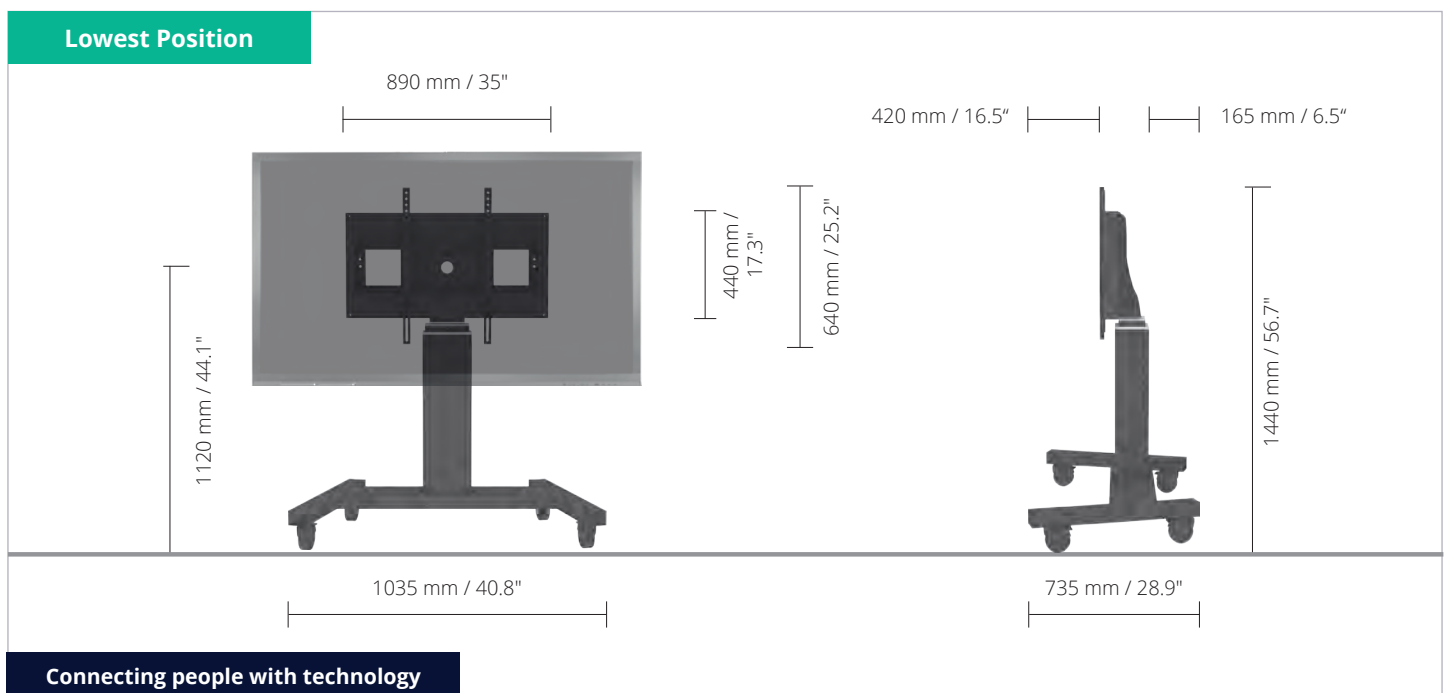
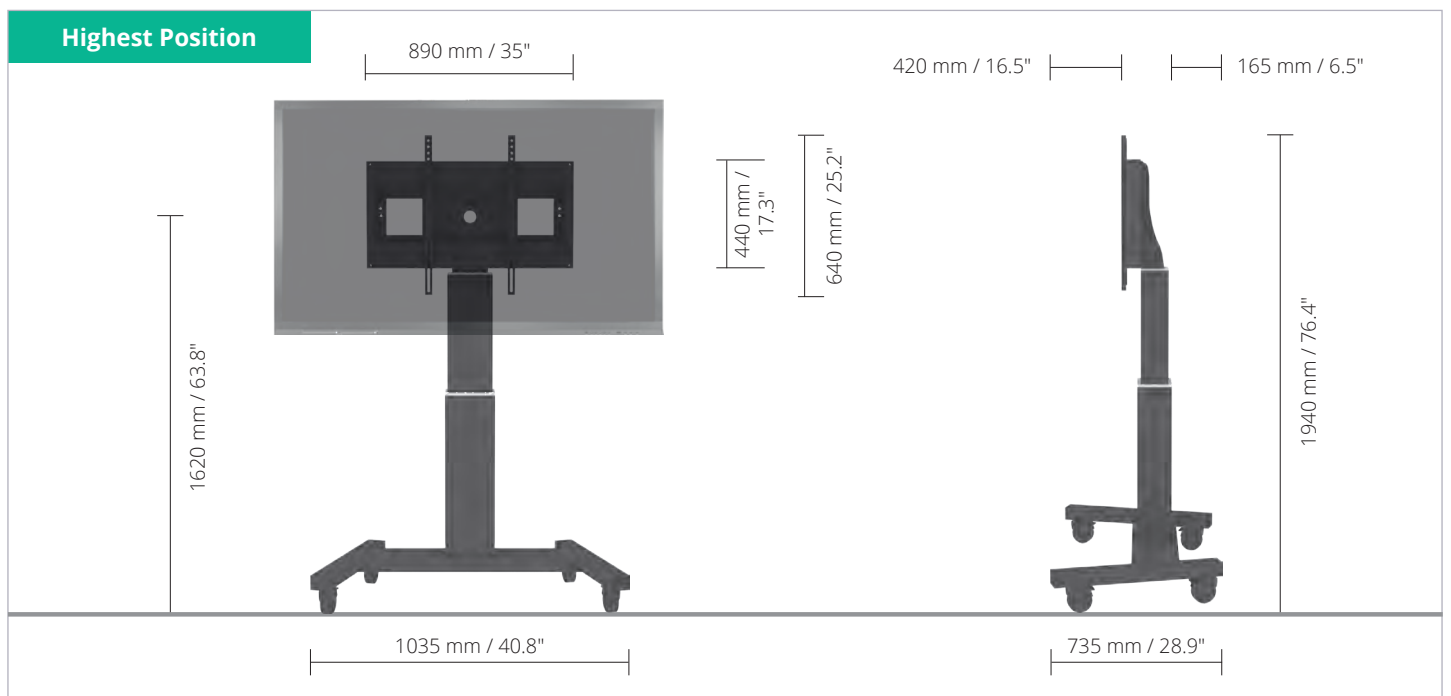
Size index



	Kindergarten			Primary school		Secondary school		Adults
Silhouette	A	B	C	D	E	F	G	
Age (years)	2-3	3-4	4-7	6-11	11-14	13-16	16+	
Body size (mm / ")	930-980 37-38.6	1080-1210 42.5-47.6	1190-1420 46.9-56	1330-1590 52.4-62.6	1460-1765 57.5-69.5	1590-1880 62.6-74	1740-2070 68.5-81.5	
Colour								

Mobile Height adjustable Trolley Lift for up to 86" displays

- Electrical height adjustable column, black anodized.
- 500 mm of height adjustment
- V-shaped mobile stand with four heavy duty castors – two with brakes, RAL 7021 black grey.
- Display mount for use with up to 86" screens.
- VESA 200 x 200 up to 800 x 600.
- Maximum load approximately 150 kg / 330.7 lbs.



Connecting people with technology

/ Detail Views, Accessories & Packing units

Detail views



Pull & release locking brackets for easier mounting of display



Smooth running & lockable castors



Wired remote control

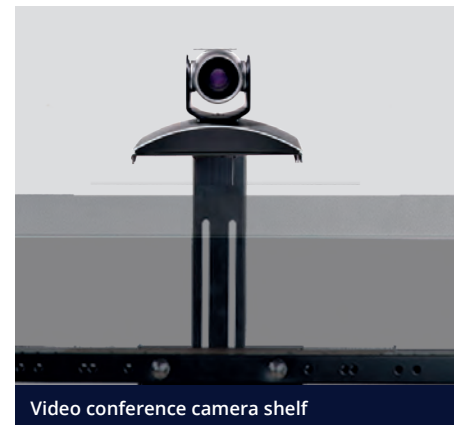
Accessories



Side shelf



Lockable wall bracket



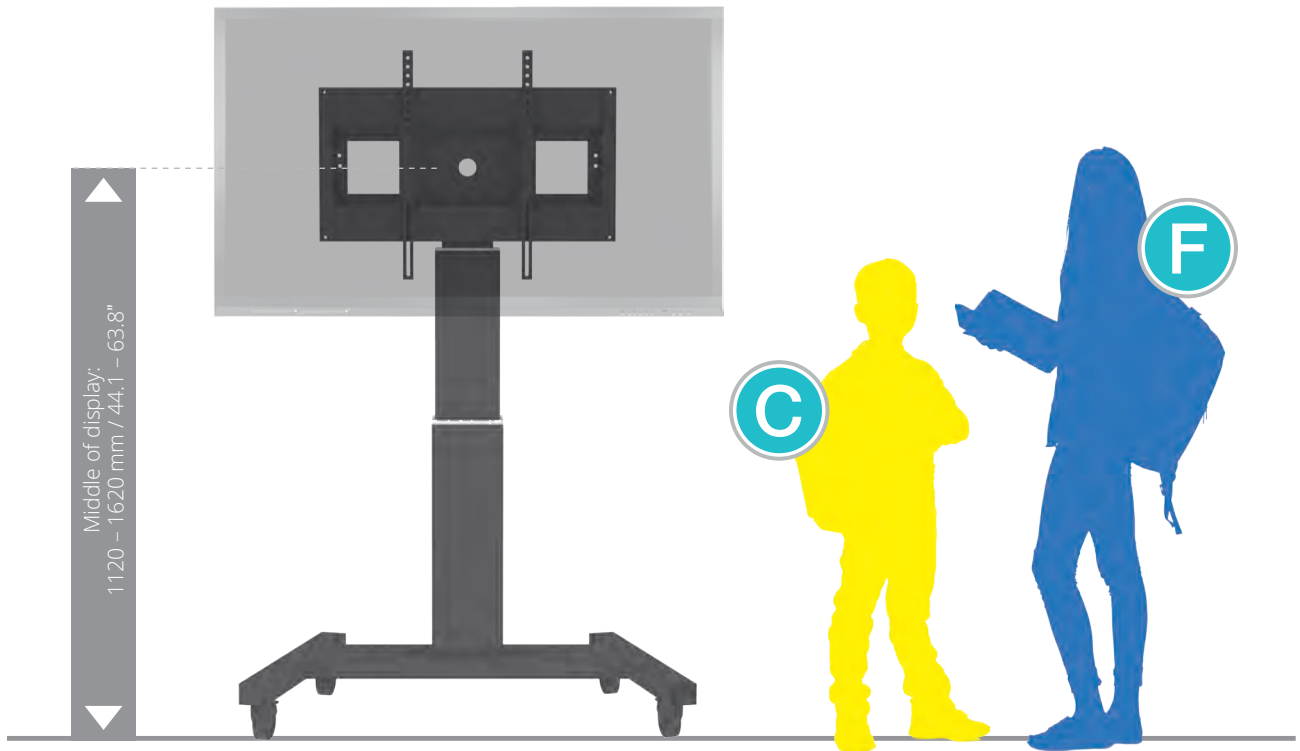
Video conference camera shelf

Packing units

Item no.	Description	Packing dimensions (mm / ")	Net weight (kg / lbs)	Gross weight (kg / lbs)
CCE-50B	Electrical height adjustable column, 500 mm / 19.7" height adjustment, L = 700 mm / 27.6"	970 x 270 x 220 / 38.2 x 10.6 x 8.7	18,0 / 39.7	19,5 / 43
AF-SCETA-N	Display mount	160 x 900 x 450 / 6.3 x 35.4 x 17.1	11,7 / 25.8	13,6 / 30
MST-SCETA-V	V-shaped mobile stand	1140 x 780 x 150 / 44.9 x 30.7 x 5.9	13,0 / 28.7	16,5 / 36.4
Total weight			42,7 / 94.2	49,6 / 109.4

/ Size Index

Size index



	Kindergarten		Primary school			Secondary school		Adults
Silhouette	A	B	C	D	E	F	G	
Age (years)	2-3	3-4	4-7	6-11	11-14	13-16	16+	
Body size (mm / ")	930-980 37-38.6	1080-1210 42.5-47.6	1190-1420 46.9-56	1330-1590 52.4-62.6	1460-1765 57.5-69.5	1590-1880 62.6-74	1740-2070 68.5-81.5	
Colour	